

Installation and operating manual for hitch 5KPVM0.

Hitch for Multi-Mover electric power tugs up to 10 tons.
Maximum Speed 6 km/h

1. Scope of application

Scope of application

The bolt hitch 5KPVM01000 is for pulling trailers on powered forklifts. Towing couplings do not require design certification.

Characteristic values

D value: 19.7 kN
Support load: 300 daN

Towing eyes

Suitable only for connection towing rings DIN 8454 and DIN 74054 or ISO 8755 in non-public road transport.

2. Descriptions and technical data:

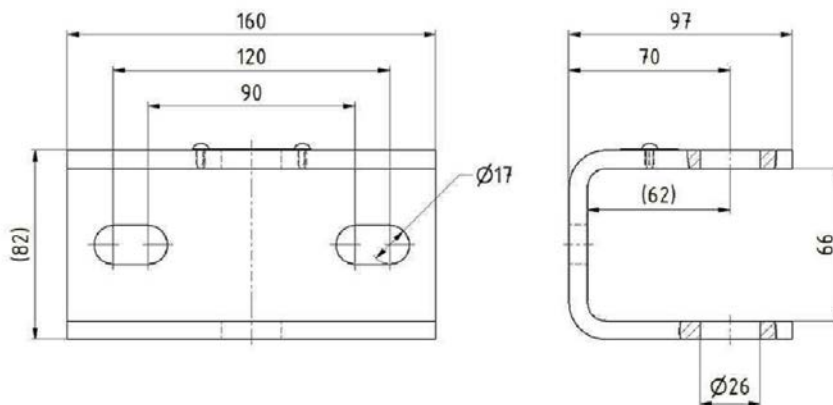


Figure 1 Dimensions 5KPVM01510

The towing coupling KU61025 and KU63025 corresponds to the dimensions in Fig. 1. For securing the coupling bolt, towing coupling KU630-25 has a chain, including a cotter pin, firmly mounted to the mouth of the coupling. The permitted towing capacity is 10 tons. The total permissible weight of the tractor unit is 2.5 tons.

3. Installation

Important note:

When installing the coupling, the applicable regulations (such as UVV for Vehicles) and the vehicle manufacturer's installation guidelines must be observed!

Installation:

The coupling is screwed to the vehicle with two screws of types M12-10.9 DIN EN 24014 (corresponds to DIN 933), DIN EN 24017 or ISO 4762 (corresponds to DIN 912). To achieve the correct tightening torque, use a torque wrench. The tightening torque is 300 Nm at a total friction coefficient of μ ges 0.14.

4. Description and operation

(see figure 2)

When hitching and unhitching, the trade association regulations must be observed. People must stay out from between the vehicles. The hitch must be operated only while locked. During hitching and unhitching, the attachment drawbar must be as horizontal as possible to the coupling.

4.1 Description:

The coupling is a non-automatic hitch and corresponds to DIN 15170 form F in regard to the catcher dimensions and scope of use.

4.2 Operation:

4.2.1 Disconnecting and opening the hitch:

Secure the trailer with support feet or similar equipment. Secure against rolling away.

Hitching and unhitching are done by inserting or removing the coupling bolt (2,3,4) into or out of the hole in the coupling jaw (1). The coupling bolt must be secured against unintentional removal or reversal. This is done by securing with a cotter pin (5).

Never disconnect if the trailer is under tension or pressure.

When the towing vehicle is in reverse, the drawbar's towing rings must always meet the funnel of the catcher (1), i.e. it must be between the jaw lugs. If this is not observed, the catcher or towing ring can be damaged.

Legend

| | |
|---------------------------------|------------|
| 1. Coupling jaw with Bolt | 5KPVM01000 |
| 2. Normal bolt 25x125 | |
| 3. Tow Ball 25 x 165 mm | 5KPAA70241 |
| Tow Ball extra long 25 x 185 mm | 5KPAA70242 |
| 4. Cone head 25 -30 | 5KPAA70243 |
| 5. Cotter pin | 5BMBC20002 |



Fig. 2 5KPVM0 and other bolt types

Bolzen:

| Typ | Zul. Anhängelast | Für Kupplung | Bolzen-Ø | Kugel- bzw. Zapfen- Ø | Bolzenlänge | Besonderes |
|--------------|------------------|--------------|----------|-----------------------|-------------|--|
| | [t] | | [mm] | | [mm] | |
| NB25x125 | 10 | KU610-25 | 25 | - | 125 | - |
| KUB25/50x188 | 10 | KU630-25 | 25 | 50 | 188 | Spezialbolzen nur für Hersteller Multi-Mover |
| ZAB25/30x178 | 10 | KU630-25 | 25 | 30 | 178 | Spezialbolzen nur für Hersteller Multi-Mover |

5 Maintenance:

5.1 Service

- The coupling is maintenance- and repair-free to the greatest extent possible. Once a year, or during frequent use, the screws' tightening torques must be checked. If the hitch body or bolts are damaged, they must be replaced with the corresponding parts. If the permissible limit size for the bolt or hole is too small or large, the parts must be replaced.

The limit sizes are:

Bolt with diameter 25: 23 mm. If the bolt is smaller at any point, it must be replaced.

- The coupling must always be cleared of dirt and corrosion to ensure trouble-free operation.

5.2 Testing

- Coupling bolt (2,3,4)
Measure the diameter of the coupling bolt when it is clean. Nominal size 25 mm Wear limit 23 mm. If the limit size is not met, the coupling bolt must be replaced.
- Coupling jaw (1): Mounting hole for the coupling bolt in the coupling jaw: Nominal dimension 26 mm Wear limit max. 27 mm oval. If the limit size is not met, the coupling jaw must be completely replaced.
When replacing components, use only original Multi-Mover replacement parts.

5.3 Safety notes.

- The user must operate the coupling only in technically perfect condition and forbid use by unauthorized parties.
- The loads indicated on the type plate are not to be exceeded.
- Unauthorized conversions and modifications of the coupling are not permitted.

Multi-Mover Europe BV

info@Multi-Mover.eu
Multi-Mover.eu

Version JJO/11.8.2018