

# Installation and operating manual for drawbar coupler 7VLKA03341

Drawbar coupler for Multi-Mover electric tractors up to 20 tons.

## 1. Scope of application

The drawbar coupler MME 20 To, item No. 7VLKA03341, is for pulling trailers on powered forklifts. Towing couplings do not require design certification.

### Towing rings:

Suitable only for connection DIN 8454 and DIN 74054 or ISO 8755 in non-public road transport.

## 2. Descriptions and technical data:

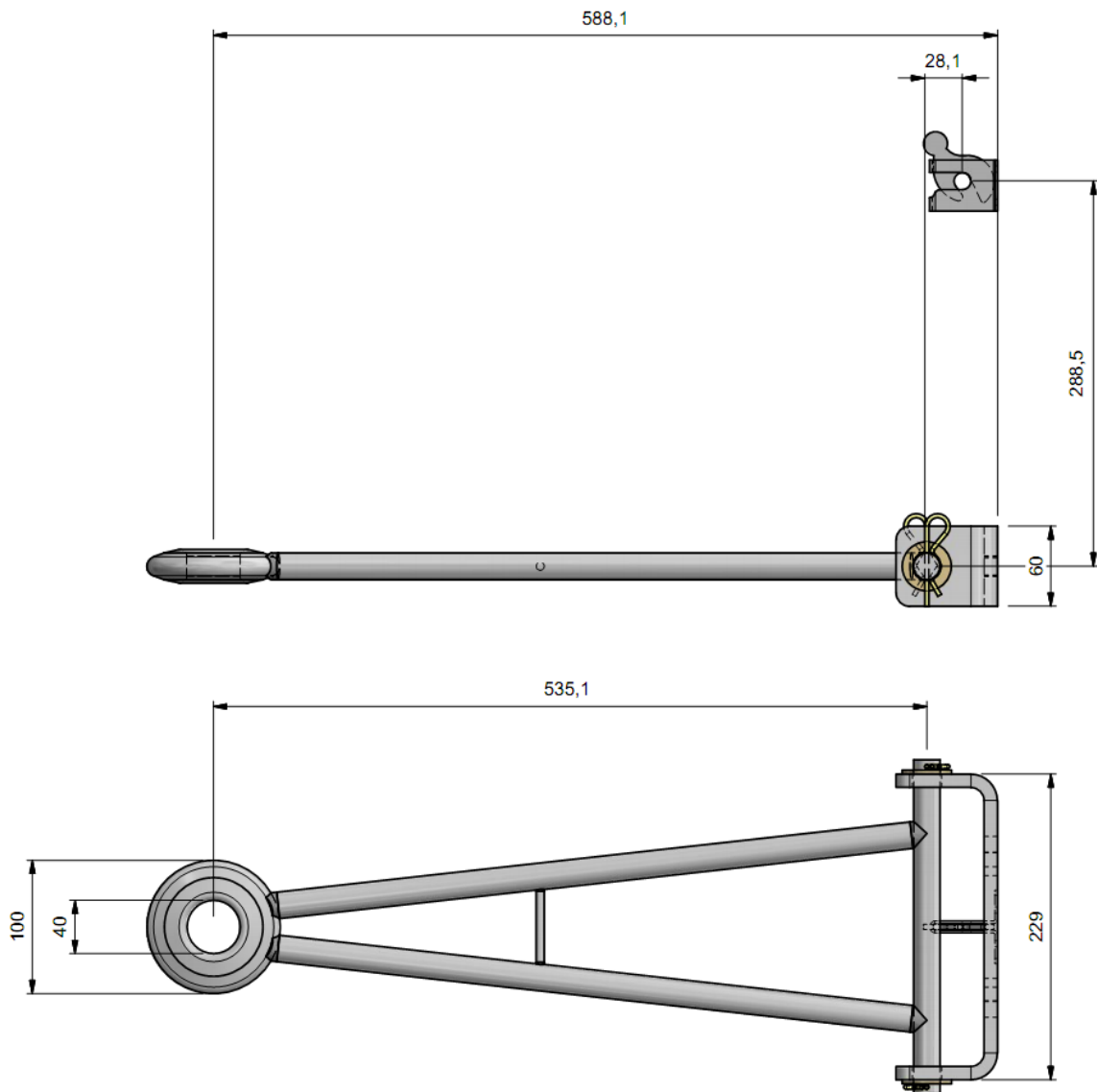


Figure 1 Dimensions 7VLKA03341

The permitted towing capacity is 20 tons. The total permissible weight of the tractor unit is 2.5 tons.

### 3. Installation

Important note:

When installing the coupling, the applicable regulations (such as UVV Vehicles) and the vehicle manufacturer's installation guidelines must be observed!

Installation:

The coupling is screwed to the vehicle with two screws of types M16-10.9 DIN EN 24014 (corresponds to DIN 933), DIN EN 24017 or ISO 4762 (corresponds to DIN 912). To achieve the correct tightening torque, use a torque wrench. The tightening torque is 300 Nm at a total friction coefficient of  $\mu_{ges}$  0.14.

### 4. Description and operation

(see figure 2)

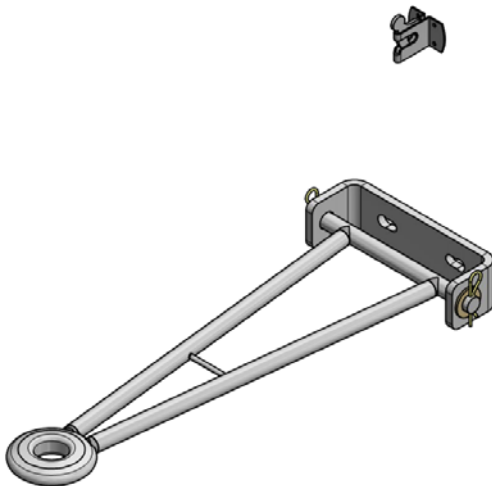
When hitching and unhitching, the trade association regulations must be observed.

People must stay out from between the vehicles. The hitch must be operated only while locked.

During hitching and unhitching, the attachment drawbar must be as horizontal as possible to the coupling.

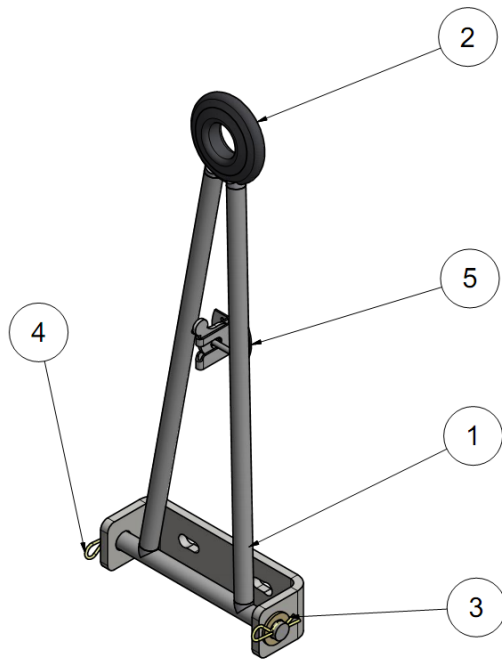
#### 4.1 Description:

The coupling is a non-automatic hitch and corresponds to DIN 15170 form F in regard to the drawbar dimensions and scope of use.



Ziehen / Pull /Trek Positie

Figure 2.1 Operation 7VLKA03341



### Lagerung / Upright / Sta Positie

Figure 2.2 Operation 7VLKA03341

5	1	VLKA03199	HEKSLUITING AUTOMATISCH
4	2	BMBC00132	verende borgclip enkel 3mm
3	2	BMRI00115	SLUITRING_DIN 125 - A 21
2	1	VLKA03340	TRIANGEL MET TREKOOG 1800KG
1	1	VLKA03134	BASISPLAAT VBA AANSLUITING

## 4.2 Operation:

### Disconnecting and opening the hitch:

Secure the trailer with support feet or similar equipment. Secure against rolling away.

Never disconnect if the trailer is under tension or pressure.

When the towing vehicle is in reverse, the drawbar's towing ring (Fig. 2.1) must always meet the funnel of the catcher, i.e. it must be between the jaw lugs. If this is not observed, the catcher or towing ring can be damaged.

## 5 Maintenance:

### 5.1 Service

- The coupling is maintenance- and repair-free to the greatest extent possible. Once a year, or during frequent use, the screws' tightening torques must be checked. If the hitch body or bolts are damaged, they must be replaced with the corresponding parts. If the permissible limit size for the bolt or hole is too small or large, the parts must be replaced.

The limit sizes are:

Towing ring with diameter 40: 42 mm. If the towing ring is larger at any point, it must be replaced.

- The coupling must always be cleared of dirt and corrosion to ensure trouble-free operation.

## 5.2 Testing

### 1. Towing ring

Measure the diameter of the towing ring when it is clean. Nominal size 40 mm Wear limit 42 mm. If the limit size is not met, the towing ring must be replaced.

When replacing components, use only original Multi-Mover replacement parts.

## 5.3 Safety notes.

- The user must operate the coupling only in technically perfect condition and forbid use by unauthorized parties.
- The loads must not be exceeded.
- Unauthorized conversions and modifications of the coupling are not permitted.

Multi-Mover Europe BV  
info@Multi-Mover.eu  
www.Multi-Mover.eu

Version JJO/16.1.2017